



8 Drysdale Dr, Lambton



Peaceful Bushland Hideaway!

Its hard to imagine a home that offers so much so close to town. Set in a quiet cul de sac and on a battleaxe block backing to bushland reserve your hidden oasis awaits.

With 4 bedrooms all with built ins, 3 have en-suite bathrooms !! Its hard to determine which one will be the master bedroom. With ducted reverse cycle air-conditioning through out the property and a combustion fire for a real cosy winters night.

This home has a double garage with internal access, a 2/3 car carpot out front also. A sensational kitchen with stone benchtops overlooking a mammoth fully covered and enclosed outdoor area ideal for those summer BBQ's. Ohh not forgetting the in ground pool and low maintenance landscaped yard.

This home has 2 generous living areas divided by the dining

4 3 4 740 m2

Price	SOLD for \$727,500
Property Type	Residential
Property ID	111
Land Area	740 m2
Floor Area	165 m2

Agent Details

Peter Saunderson - 0468
407 946

Office Details

Saunderson Property
Level 1, 42 King Street
Newcastle, NSW, 2300
Australia

and kitchen areas. A separate laundry off the kitchen and garage with easy access to the backyard. Fully tiled through out for easy care and appeal.

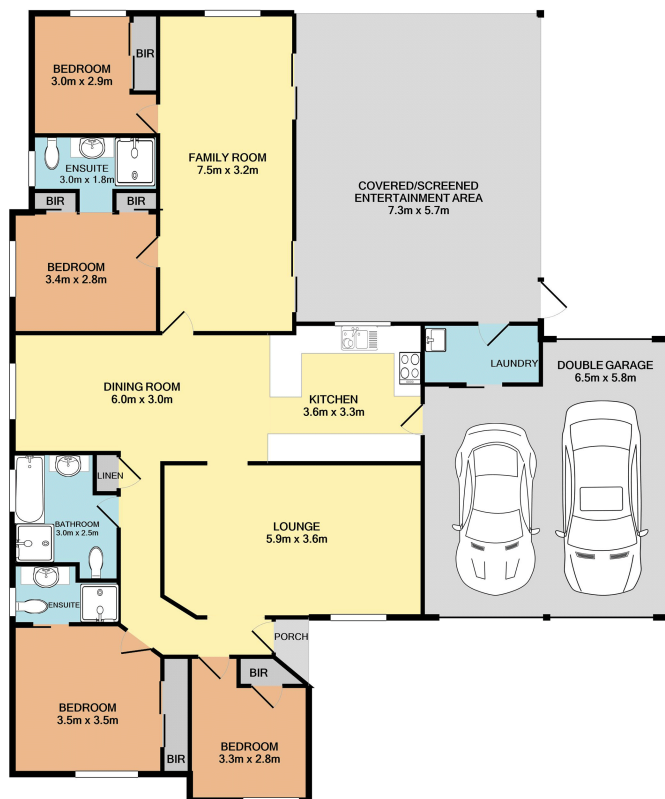
Its the little things with this home that set it aside from a lot of homes you see today, the hidden extras that people take for granted but cost a fortune if you want to add them, with this home they are all there. It even comes with a huge double door fridge.

Yes it would make a great investment property, and equally a fantastic family room the choice is yours.

The above information provided has been furnished to us by the vendor/s. We have not verified whether or not that information is accurate and do not have any belief in one way or the other in its accuracy. We do not accept any responsibility to any person for its accuracy and do no more than pass it on. All interested parties should make and rely upon their own inquiries in order to determine whether or not this information is in fact accurate.

02 4023 7779





TOTAL GROSS
Floor Area 261 sqm



8 DRYSDALE DRIVE, LAMBTON



Approx. Floor Area 261 sqm

Floor Plan Disclaimer : Floor Plans are intended as an approximate guide only. No representations or warranties of any nature are given or intended and any person using this information other than as a guide should rely on their own enquiries